

FleetAdvance Mobile App: Getting Started

Welcome to the FleetAdvance Mobile application! If you have not already downloaded the app, please do so by visiting the Apple App Store or Google Play Store on your smartphone. Once in the app store, search for “FleetAdvance” and download the app.

Upon opening the app, accept the terms and conditions before continuing. Then, you will see an **Add a Card** button (Figure 1). Don’t have a Comdata card? Swipe right to use the “Free Agent” mode (Figure 2).

Figure 1

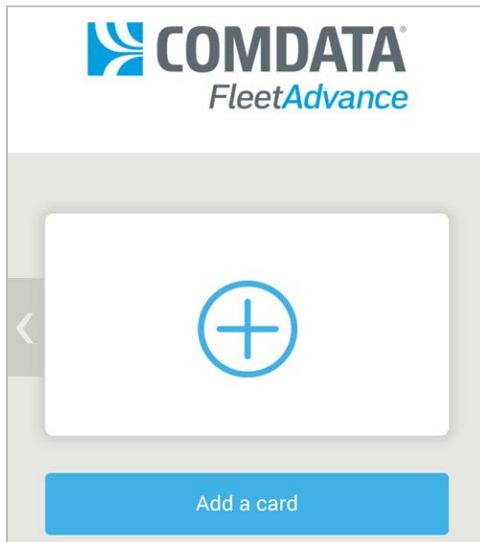
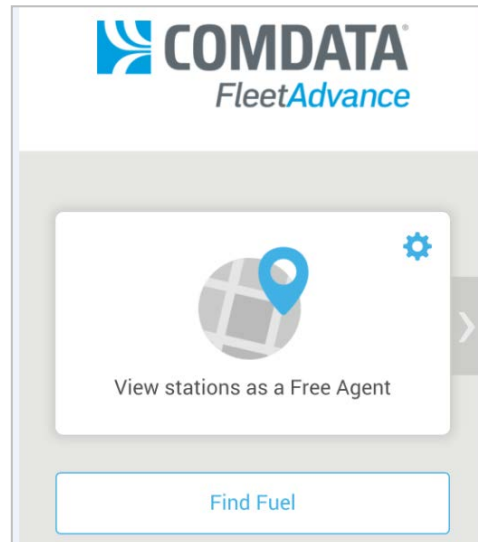


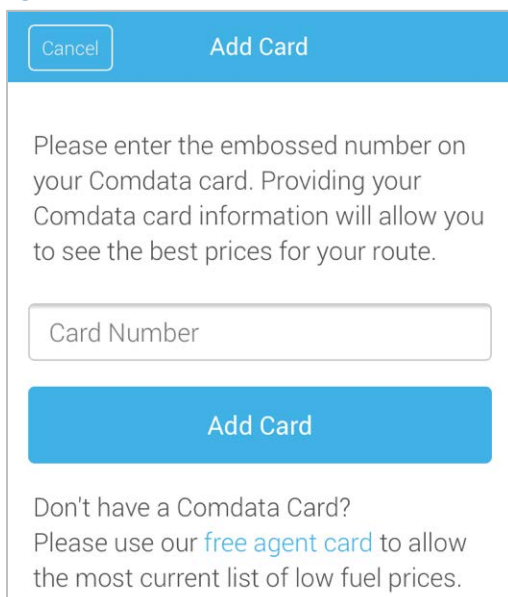
Figure 2



Adding a Card

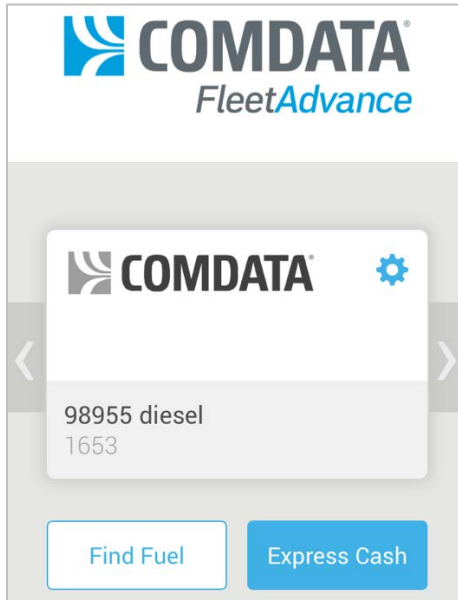
1. To add a Comdata card, tap **Add a Card** as seen in Figure 1.
2. Enter the Comdata card number and then tap **Add Card** (Figure 3). Note that only active cards can be added.

Figure 3

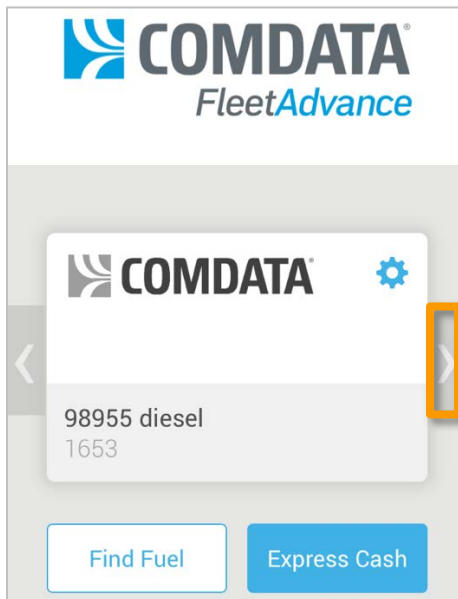


If successful, the card will be added to the app and display as shown in [Figure 4](#).

Figure 4



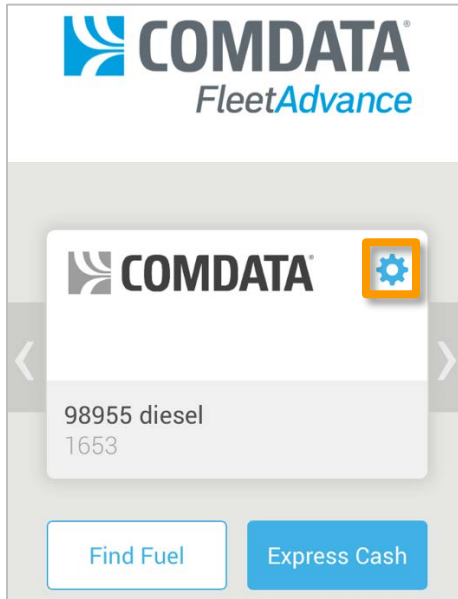
3. To add another card, tap on the right arrow and follow the previous instructions once more.



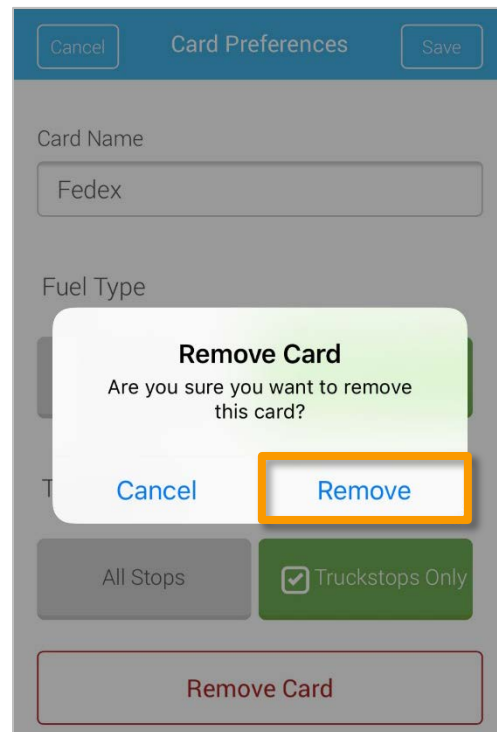
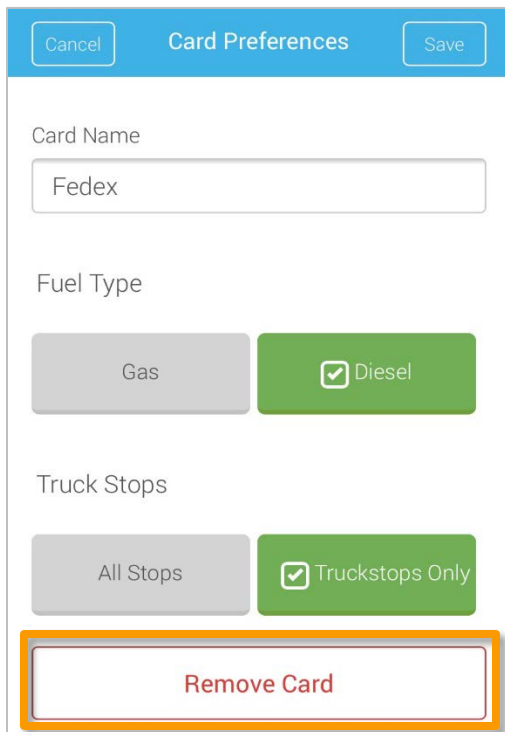
Note: The **Express Cash** button will display *only if* the card is set up for Express Cash. Pressing this button will prompt you to set up a user name and password for using Express Cash features, such as performing direct deposits and registering Comchek drafts.

Remove a Card

1. Locate the card you want to remove and tap on the settings icon.



2. Tap on **Remove Card** > **Remove**

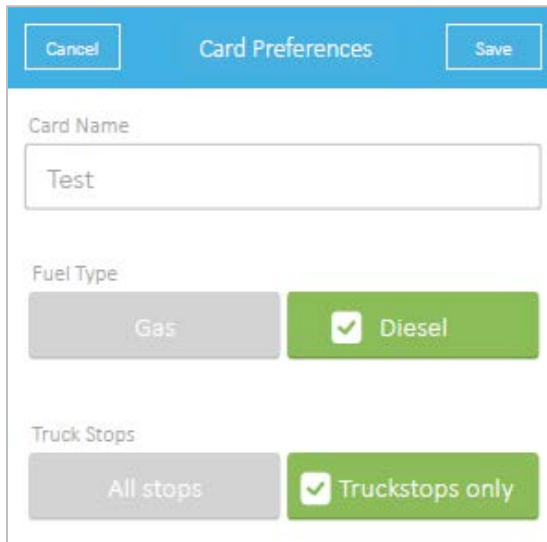


Finding Fuel

1. Before you begin searching for fuel, set up your fuel preferences by selecting the gear icon (⚙️) displayed on your added card (Figure 4). Select your fuel type and Truck Stop preference (Figure 5). Then, select **Save**.

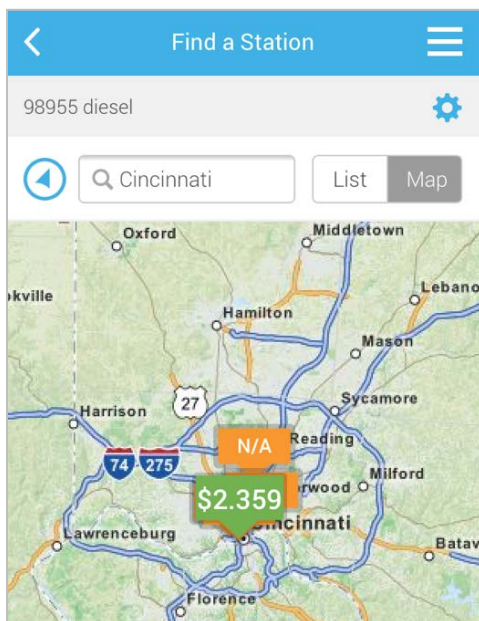
Note: You can set up preferences for only a MasterCard or in Free Agent mode. Proprietary cards default to Diesel fuel and Truckstops only.

Figure 5



2. Select the **Find Fuel** button as seen in Figure 2 and Figure 4. On the Find a Station screen, enter a city and/or state, and then select **Search**. The map will refresh to display all possible locations as shown in Figure 6. Use the arrow icon (↶) to search within your current area on the road. You can also use the **List/Map** button to view the locations as a list.

Figure 6



- Green pins represent the most cost saving locations. If a price cannot be verified, an N/A pin will display. Select a pin to see more information, such as the location name and address. To navigate to the location using your smartphone's GPS application, select **Take Me There** (Figure 7). You can also zoom in and out on the map if necessary.

Figure 7

